



DOCUMENT CONSULTING

CD 1230



DIGITAL
MULTIFUNCTIONAL SYSTEM



CD 1230

CD 1230 – THE ALL-ROUND SYSTEM.

Copying, printing, scanning – the CD 1230 delivers first class b/w copying and printing results from the start. At 30 pages a minute long waiting times belong to the past. What is more, this unbeatable multifunctional system has a whole range of other features – making it right at home as well as in larger office environments. Here it performs complex tasks reliably, efficiently and competently – regardless of whether from paper originals or computer data. And if you need to make paper documents available in file format in the network, the scanner function offers a range of processing options integrated into the system itself – even colour and duplex.



SOMETIMES IT IS IMPORTANT NOT TO BLOCK RAPID PROCESSING.

The 512 MB RAM and 80 GB hard disk mean the CD 1230 has the power to organise your documents. For copying, printing or scanning – this system is the multi-talent that takes care of all your jobs in the shortest possible time. Input from a variety of sources is taken on without hesitation and while it is performing one task, it is already processing the next. This guarantees an uninterrupted workflow in your day-to-day business. Even if you have not used it for a while: this super quiet team player wakes from sleep mode in only 15 seconds.



**WHEN IT COMES TO DIVERSITY,
WE ARE WELL VERSED IN SOLUTIONS.**

A4 copies, followed by a batch of A3 pages for the very same job? The CD 1230's data management system means mixed jobs are no problem. All the project components can be saved in the buffer, meaning that the finished product can be printed whenever required. You can then collate and print as many copies as you need in any format you want, at the push of a button.



DURABILITY IS ALREADY BUILT IN.

The quality components used in construction make the CD 1230 the perfect workmate for your daily business. From the smallest screw to the extremely durable drum, you can rely on this device to last and last. Reliability is not just an economic advantage!



GREATNESS LIES IN EVEN THE SMALLEST DETAIL.

The sophisticated technology hidden inside the CD 1230 reveals itself in a disarmingly simple exterior. A large, tilting colour display presents this device's many options – supported by a graphic interface, which answers all your questions. Thumbnails of all documents held in the buffer are displayed on the control screen and can be selected at the touch of a finger. Another great time-saving feature: the 50 memory functions for saving frequently used program combinations for copying, printing and scanning. And very urgent PDF files can even be printed directly from a USB stick, without a PC.



CD 1230





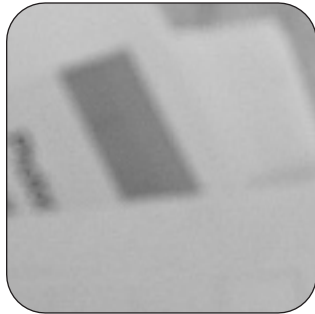
WE HAVE SOMETHING TO PRESENT TO YOU.

Professional quality brochures can be produced in an instant, without running from one machine to another to get the stapling done. With a corresponding finisher extension, the CD 1230 turns into a little printing professional for even the greatest of expectations. Hole punching, folding, stapling or sorting – the CD 1230 takes on all those time consuming tasks. You can rely on this multi-talent's functions.

BUT THERE IS MORE.

The CD 1230's capabilities do not end there. As a true all-rounder, it can even be extended to perform as a fully functional fax system. This time saving professional has no cause to hang its head on this point: the extension is completed in an instant by simply inserting the fax card. The fax system perfectly integrates into your network. And for those who place particular value on the security of their data, the Data Security Kit can be installed, for the latest in security systems.





WHEN LESS IS SIMPLY MORE.

Diversity is the soul of the 600 MHz processor – and this one has plenty – meaning the CD 1230 can be accessed via network or directly. Put simply: the multi-tasking capabilities allow copying, printing and scanning jobs to be processed simultaneously. If it is already copying, the 80 GB hard disk saves incoming print jobs into a queue. What is more, the latest software ensures that your system efficiency needs are always admirably met. So much in one: one single IP address for everything.

CD 1230

SO EASILY FROM PAPER TO PC.

One of the CD 1230's highlights is the duplex colour scan system with a resolution of up to 600 dpi. Anything you scan in here can be fed directly into the office network – in any format you choose. It is up to you if you want the scan file saved straight to a folder on your PC, onto an FTP server or attached to an e-mail. Even here this office professional has a speed advantage: producing up to 50 black and white scans a minute or 25 in colour.



TECHNICAL DATA CD 1230

GENERAL

Type	Desktop
Function	Copy, print, scan, optional: fax
Print technology	Laser b/w
Original format	max A3 on the platen glass
Copy/print speed	max 30 A4 pages/min and 20 A3 pages/min
1st copy/warm-up time	3.9 seconds*/30 seconds
Copy resolution	600 x 600 dpi
Greyscales	256
Paper feed	2 x 500 sheet universal cassettes (A3-A5R), 200 sheet multi-bypass (A3-A6R)
Paper weights	Universal cassette 60-105 g/m ² , multi-bypass 45-200 g/m ² , duplex 60-80 g/m ²
Paper output	250 sheet A4
Copy memory	512 MB RAM (max 1,024 MB - 2 slots), 80 GB HDD**
Continuous copying	1-999 copies
Zoom	25%-400% in steps of 1%
Functions	Duplex, moveable touch-screen, 1,000 management codes, multi-tasking controller, online help at touch-screen, programming of 50 programs for copying, printing, scanning and faxing, brochure function, etc.

DIMENSIONS/WEIGHT

Dimensions	745 x 646 x 599 mm (H x W x D)
Weight	approx. 85 kg

ENVIRONMENT

Mains voltage	220/240 V, 50 Hz
Power consumption	approx. 1,010 W in operation, approx. 230 W in stand-by mode, approx. 17 W in sleep mode
Noise level	approx. 69 dB(A) in operation, approx. 52 dB(A) in stand-by mode
Safety	GS/TÜV, CE

PRINT SYSTEM

Type	Integrated within the system
Print format	A3-A6R
Print speed	max 30 A4 pages/min
Print resolution	600 x 600 dpi
Processor	PowerPC 750FL/600 MHz
Interfaces	IEEE 1284, USB 2.0, 10/100BaseTX, USB host, CF slot
Network protocols	TCP/IP, IPX/SPX, Net BEUI, EtherTalk

Operating systems	Windows 2000, XP, Server 2003, Vista, Novell NetWare, Linux, Mac ex OS 9.2
Emulations	PCL6, KPDL 3 (PostScript 3 compatible), PRESCRIBE IIe, Line Printer, Diablo 630, Epson LQ-850, IBM Proprinter X24E, KCGL
Functions	Direct printing from USB stick, encryption in data communication (SSL), etc.

SCAN SYSTEM

Scan type	CCD colour and b/w
Scan format	max A3
Scan speed	Colour: max 25 A4 originals/min, b/w: max 50 A4 originals/min
Scan resolution	Standard (200 x 100 dpi), fine (200 x 200 dpi), super fine (200 x 400 dpi), 300 x 300 dpi, ultra fine (400 x 400 dpi), 600 x 600 dpi
Scan modes	Photo, text, photo/text, OCR
File types	TIFF, PDF, JPEG
Interface	10/100BaseTX
Network protocol	TCP/IP
Operating systems	Windows 2000, XP, Server 2003, Vista, Novell NetWare, Linux, Mac ex OS 9.2
Software	Paper Port (OEM-version)
Functions	Scan to SMB, scan to e-mail, scan to FTP, TWAIN-scan, LDAP

OPTIONAL FAX SYSTEM (M)

Compatibility	Super G3
Original format	max A3
Modem speed	33.6 kbps
Transmission speed	3 seconds or less using JBIG
Compression methode	JBIG, MMR, MR, MH
Fax resolution	Standard (200 x 100 dpi), fine (200 x 200 dpi), super fine (200 x 400 dpi), 300 x300 dpi, ultra fine (400 x 400 dpi), 600 x 600 dpi
Fax memory	120 MB
Operating systems	Windows 2000, XP
Functions	Integrated address book, fax-reception memory on HDD, thumbnail-viewer, fax-forwarding to another fax, e-mail or PC, denial of certain numbers, editable cover sheet

OPTIONS

Original feeder	DP-700 with simultaneous duplex scanning (A3-A5R), 100 sheet A4 capacity
Platen cover	Platen cover type D (if document processor is not installed)
Finisher	DF-730 (1,000 sheet A4 capacity, stapling max 30 sheet A4), DF-710 (3,000 sheet A4 capacity, stapling max 50 sheet A4), PH-5C hole punch unit for DF-710, BF-710 brochure folding module for DF-710 (max 16 sheet saddle stitching and folding A3/A4/B4), MT-710 multi tray for DF-710, DF-720 (internal finisher, 500 sheet A4 capacity, stapling max 30 sheet A4)
Job separator	JS-700 (100 sheet A4 capacity)
Paper feed	PF-700 (2 x 500 sheet universal cassettes (A3-A5R)), PF-750 (3,000 sheet large capacity cassette (A4))
Other options	Data Security Kit (C), UG-30 upgrade kit for high compression PDF and encrypted PDF, BU-10 data- backup-kit, DT-700 document tray, cabinet no. 50



UTAX GmbH Norderstedt www.utax.com

UTAX and the UTAX logo are registered trademarks of UTAX GmbH.
All other brand names referred to are registered trademarks of the
respective manufacturers.

The CD 1230 is manufactured in accordance with the requirements of the ENERGY STAR Program.
UTAX recommends that you use only genuine UTAX accessories for trouble-free operation of your system.
*Depending on operating status. **For copy, print and scan. Image shows machine with optional accessories.
Specifications subject to change without notice. (12/2007)



Your UTAX dealer